



RMRFuel Fuel Consumption Monitor

(for Windows Mobile)

User Guide



© RMR Software 2004

All rights reserved

Contents

Contents.....	1
RMRFuel.....	2
Program Setup.....	2
Currencies.....	2
Vehicles.....	3
Preferences.....	3
Fuel Screen.....	5
Add fuel purchases.....	5
Consumption Graph.....	6
Fuel usage statistics.....	7
Notepad.....	7
Reminder screen.....	8
Add reminders.....	8
Expenses screen.....	9
Add expenses.....	9
Additional functions.....	10
Backup and Restore.....	10



RMRFuel

RMRFuel 'Fuel Consumption Monitor' allows you to track the fuel consumption of up to 10 vehicles. It maintains a record of the Amount Paid, Price per Gallon/Litre, Distance covered and the Fuel Consumption. The program is fully configurable for all international measures, allowing entry and/or display in miles/kilometers and litres/gallons(UK or US).

For each vehicle there are 3 screens:

Fuel screen

- for entering and viewing the current and historical values of fuel purchases and consumption.
- has an associated Graph screen for viewing the data graphically.

Reminder screen

- for entering date and distance alarms.

Expenses screen

- for recording other running costs.

In addition, if you also have our **RMRBank** program, transactions entered there can be made to transfer purchases for your fuel costs and vehicle expenses to this program.

Program Setup

When you start the program for the first time you will be taken through set up screens for:

- [Currency](#)
- [New vehicle](#)

Then configure the program display and units with:

- [Preferences](#)

These are also accessible at any time from the menus, and are described below.

Currencies

The currency entered on first startup will be used as the primary currency to run the program in. Other currencies can be added for use when travelling to foreign countries.

These currencies will then be available in the add screens for temporary use when adding entries e.g. while on holiday. The costs will be converted to your primary currency at the rates you define.

To add a currency

- Use Edit > Currencies and the New button
- Define a name, symbol and the exchange rate to your primary currency.

Currencies	Sym	Rate/ £
Euro	€	1.48

Buttons: Cancel, New, Delete, OK

To update an exchange rate

- Use Edit > Currencies
- Select the currency, and change the rate to the current exchange rate.

To delete a currency

- Use Edit > Currencies
- Select the currency, and use the Delete button.



Note that if you have more than one RMR Software program, the currency file is shared between them and may be updated from any of the programs.

Vehicles

You can maintain records for up to 10 vehicles.

- Tap Edit > Vehicles > Add to create vehicle files. Enter the name and license number details as well as the currency and distance units you want to use.
- Tap Edit > Vehicles > Update to amend any of the vehicle details.
- Tap Edit > Vehicles > Delete to remove vehicle files if you no longer have the vehicle or need to keep records.

Add new vehicle

Name

License Plate

Currency

Distance

Switch vehicle files using the dropdown selector at top right of the screen.

Preferences

Tools > Preferences gives access to many options for configuring the display and operation of the program:

Settings

Set the program settings:

- Sets the number of entries to be displayed on the screen.
- Whether you wish the pop-up keyboard should be displayed in Landscape mode.

Font

Set the screen display for the records:

- Font type and Size
- Color
- Font style - bold, Italic, Underline, Strikeout

Display units

Set your preferred measurements for:

- Distance - Miles or Kilometres
- Consumption - MPG (US); MPG (UK); KPG (US); KPG (UK); MPL; KPL; Litres/10km; or Litres/100km
- Fuel quantity - UK Gallons; US Gallons or Litres

Decimal places

Individually set the number for:

- Cost
- Price
- Consumption
- Fuel Quantity

Note that, unlike other programs, you can actually enter the fuel in one set of units (such as litres) but display the consumption in another (such as MPG).



Colors

Set your color choice for:

- Screen background
 - Column headers
 - Screen buttons
 - Selected screen button
 - Dialog background
-



- Distance measurement - select from the drop down list as Total Miles, Total Kms, Elapsed Miles, or Elapsed Kms (from the trip odometer since last fill)
- Remarks - for any notes.

Note that the first entry is just a baseline entry, so although you enter details such as amount/cost etc, it is actually only the absolute distance figure that is used. And with only one entry, obviously no consumption figures or statistics are available. Next time you fill the tank and enter the details, the consumption figures will appear.

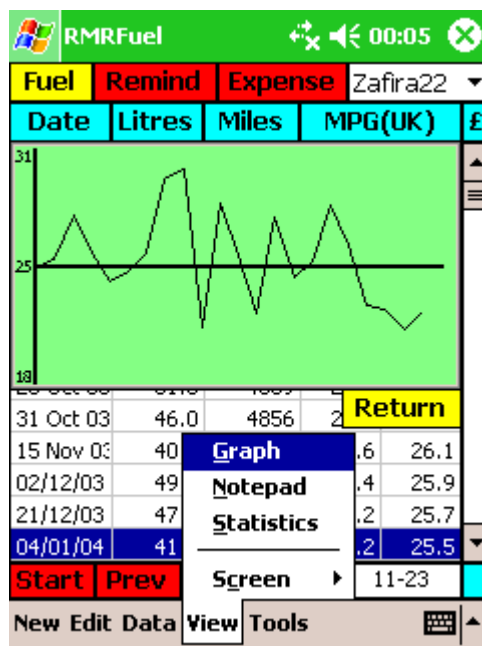
Note that we keep referring to a 'full tank' as it is preferable that every entry is based on the same baseline. If you only add a part tank each time then the calculations will be all over the place. You can obviously use some other baseline provided you are consistent, but the full tank seems to be the logical one.

When you add further purchases you can enter the elapsed distance between fills rather than absolute total distance if you prefer.

- Use Edit > Move entry if you need to rearrange any of the entries.
- Use Edit > Update entry if you need to correct the details of any entries.
- Use Edit > Delete entry if you need to remove an entry.

Consumption Graph

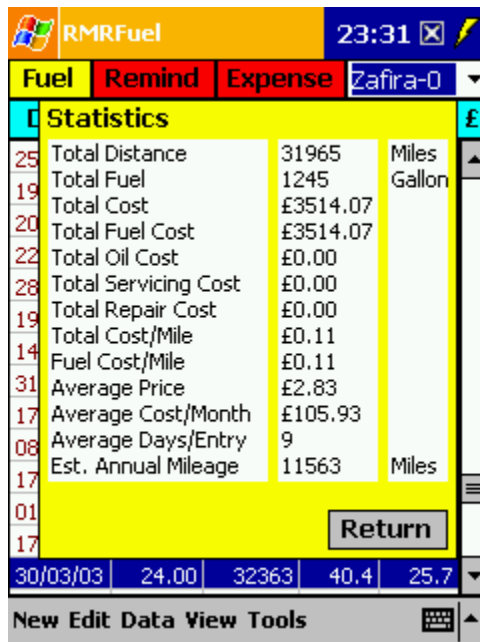
Once a few entries have been recorded, use View > Graph to show a graphical panel of the fuel consumption history for the vehicle.





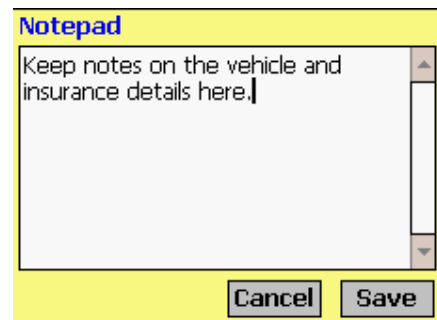
Fuel usage statistics

Tapping View > Statistics will show a range of details summarizing your overall fuel usage, distances travelled, and vehicle running costs.



Notepad

Tapping View > Notepad will produce a small memopad where you can keep details about the vehicle such as tax and insurance details, service history, or contact numbers.





Reminder screen

The Reminder view allows you to set warnings which can be used to alert you when servicing is due, or insurance needs to be renewed. Reminders can be based on either Due date or Distance. The program will then inform you when the date or distance of a fuel entry triggers the reminders.

Date	Miles	Reason	£
01/06/03	40000	Service	
15/07/03	----	Insurance due	
25/09/03	----	MoT	
01/12/03	----	Renew AA cover	

When a reminder is triggered you have the option to:

- Delete - completely delete the reminder
- Reset - set a new date or distance for that reminder
- Acknowledge - clear the message (it will be presented again at the next entry).

Add reminders

Use the New menu option and enter details of your reminders:

- check the Date box and specify a date, and/or
- check the Distance box and specify a distance in Miles or Kilometers
- Reason - add a description

When triggered reminder alarms will appear in the Fuel screen.

- Use Edit > Update entry if you need to correct the details of any entries.
- Use Edit > Move entry if you need to rearrange any of the entries.
- Use Edit > Delete entry if you want to remove an entry.



Additional functions

Register Program

Use Tools > Register program to enter your personal registration code to allow full use of the program without data restrictions. This function is also available from the opening 'nag' screen.

Export data

Use Tools > Export details to export the data for a vehicle to a CSV (comma separated values) text file. This can then be copied to PC for use in an Excel spreadsheet.

Reset start date

Use Tools > Reset start date if the data file in any screen becomes too large to delete entries earlier than the specified date.

About

Use Tools > About to obtain contact details for RMR Software and information about the program.

Backup and Restore

The program has Backup and Restore options in the Data menu of most screens:

- Use Backup data to regularly make a second copy of your data files in the "My Documents" folder in case of accidental deletion or loss. In that way the data can also be saved to a PC each time you hot-sync.
 - Use Restore to subsequently reload the backed up files if necessary. The program expects to find the data in the /My Documents/RMRBackups/RMRFuel/ and the Currency file in /My Documents/RMRBackups/RMRShared/ folders.
-